

HOW TO INTEGRATE DESIGN THINKING IN YOUR CLASSROOM

ECAMPUS ONTARIO'S TECHNOLOGIST MODEL

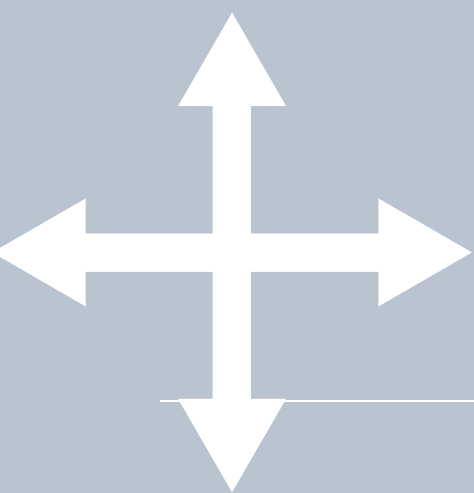
What is design thinking?

human-centered –the people who will benefit from the product or solution are directly involved in its design.

it focuses on involving learners in finding a solution, to a known problem or challenge, in a collaborative and iterative way.

EMPATHIZE

The first step is to know your learners! Connect and listen to your students. You must know who your students are before you can properly integrate technology into your lesson.



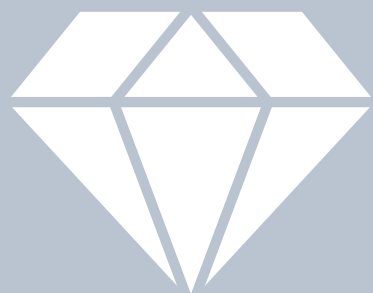
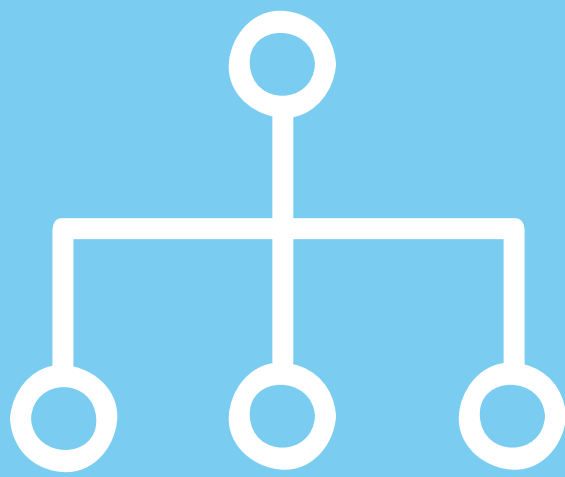
DEFINE

Once you know your learner, it is important to narrow in on what the challenges are. Identify the problem areas so that you are able to redefine the lesson/activity..

IDEATE

How can technology address your learner challenge? Firstly, build a list of possibilities, perhaps ask yourself "how might I?"

Try using a mind map!



PROTOTYPE

Now it's time to try it! Instead of talking about abstract ideas, try a mini version of the idea. You must experiment and play then share with your audience.

CONNECT

Don't forget to connect it to the curriculum! Outline your steps and make sure you give clear instructions to your learners!

Reflect and apply this to your teaching

